



Corona Virus Disease (COVID-19) Situational Report

Report No.411 Date of Issue 08th May 2021, 19:00 GMT

HIGHLIGHTS

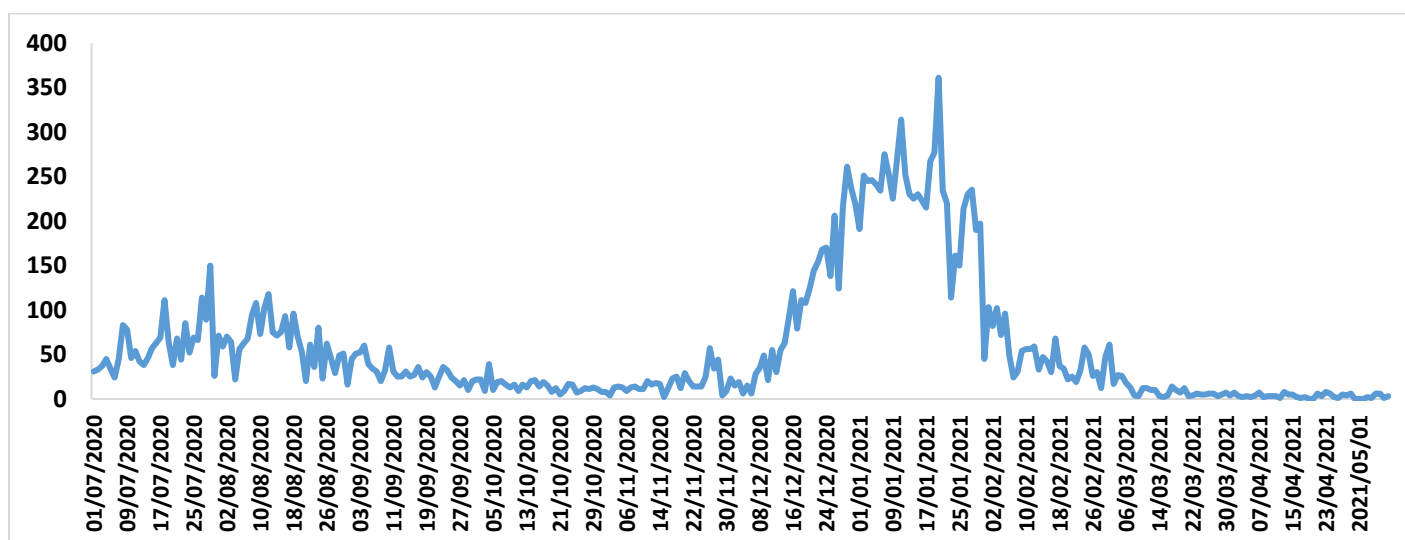
- As of 08th of May 2021, there were 3 new COVID-19 cases culminating to 18 477 cumulative cases.
- There were 582 COVID-19 tests done in the last 24 hours, translating to a 0.5% positivity rate.
- The new cases were from three regions.
- There were 4 new recoveries in the last 24 hours and there were 17 777 cumulative recoveries which translates to 96% recovery rate.
- There were no new deaths in the last 24 hours, and the cumulative number of deaths are 671.

New	Confirmed	3
	Recoveries	4
	Deaths	0
Cumulative	Confirmed	18 477
	Recoveries	17 777
	Deaths	671
	Active cases	29
Case fatality rate		3.6%

Summary of COVID-19 Cases in Eswatini as at 08th May, 2021

Region	New cases	Cumulative confirmed cases	Cumulative deaths	Case fatality rate (%)
Hhohho	1	7525	234	3.1
Manzini	1	7451	274	3.7
Lubombo	1	1947	66	3.4
Shiselweni	0	1554	97	6.2
National	3	18 477	671	3.6

Confirmed cases by day

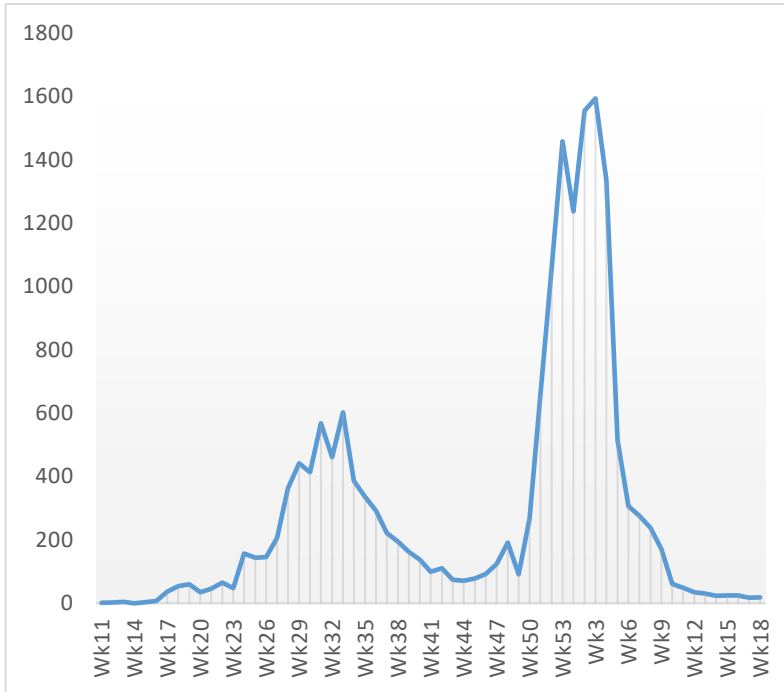




KINGDOM OF ESWATINI MINISTRY OF HEALTH

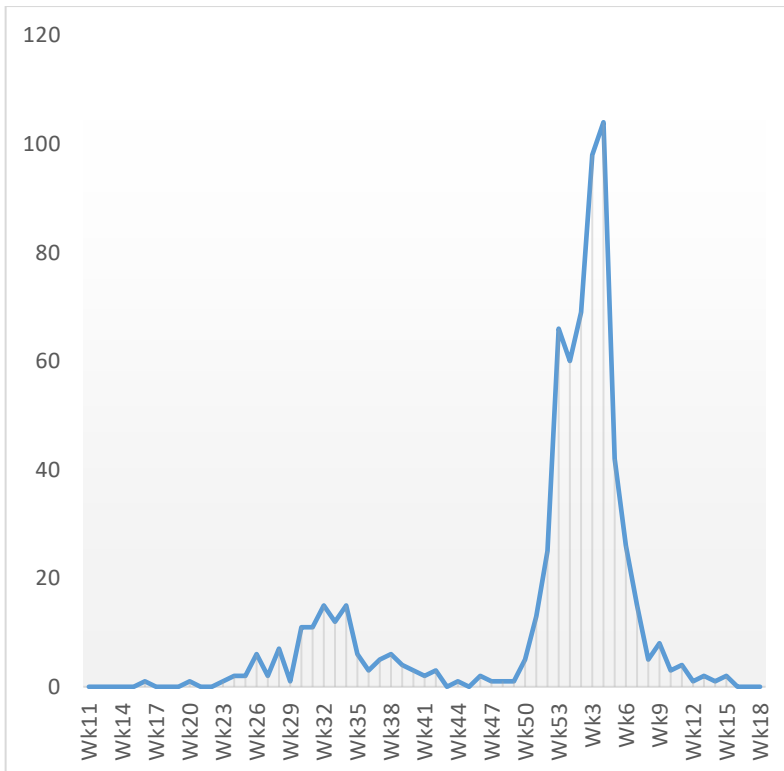


Distribution of cases by Week



- This is epidemiological week 19.
- 19 COVID-19 cases have been reported in the last seven days.
- Weekly COVID-19 cases have slightly increased by 6% during week 18 compared to week 17.
- Overall, the epidemic curve shows a downward trend.
- **NB: Please note that the week numbers have been changed to be in line with WHO epidemiological weeks.**

Weekly COVID-19 related deaths



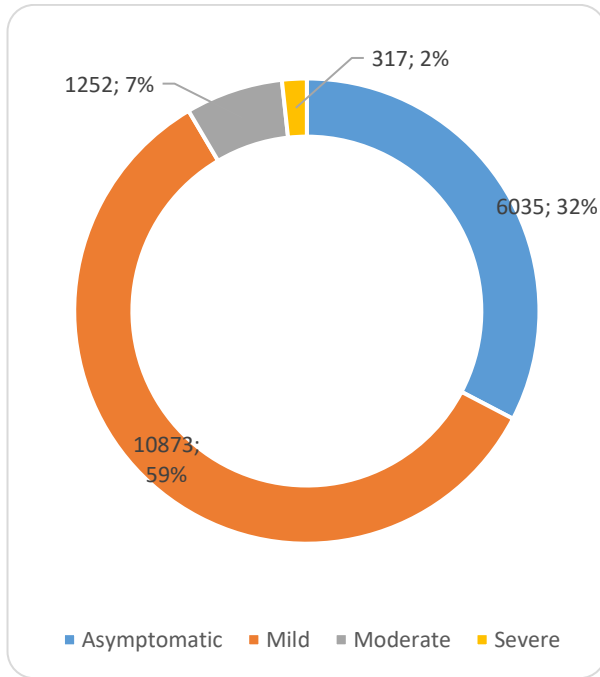
- There were no COVID-19 related deaths reported in week 18.
- This is the third week without a COVID-19 related death.
- **NB: Please note that the week numbers have been changed to be in line with WHO epidemiological weeks.**



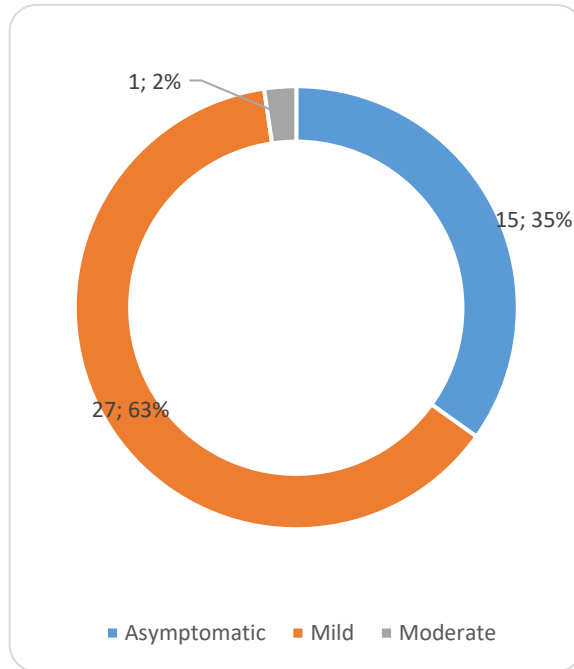
KINGDOM OF ESWATINI MINISTRY OF HEALTH



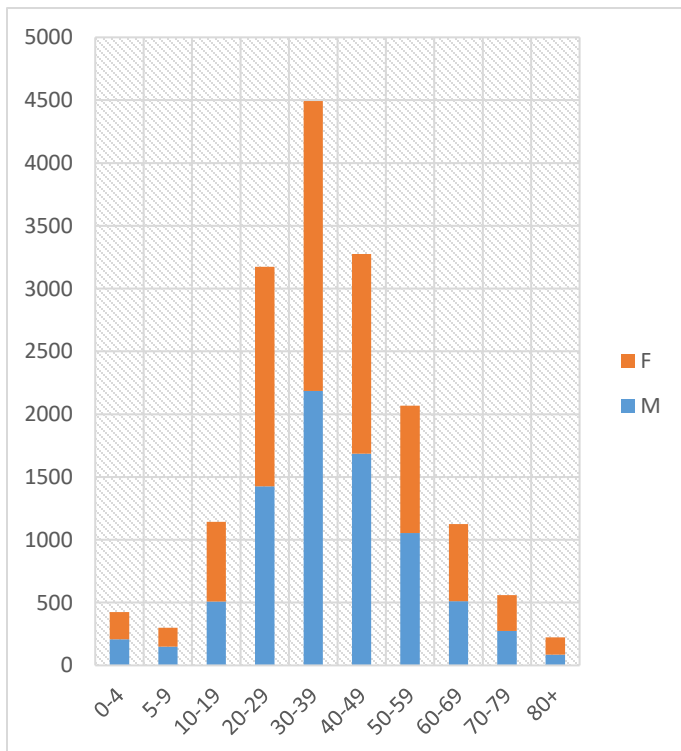
Cumulative confirmed cases by severity at diagnosis



Confirmed cases by severity at diagnosis for the past 2 weeks



Age-sex distribution of COVID-19 cases (Cumulative)



- 52% of the cases are females, 48% are males.
- Mean age is 39 years (SD 16.0).
- 27% of the confirmed cases are aged 30-39 years.
- 9% of the confirmed cases are aged 5-19 years.
- 1% of the cases are children aged <5 years.

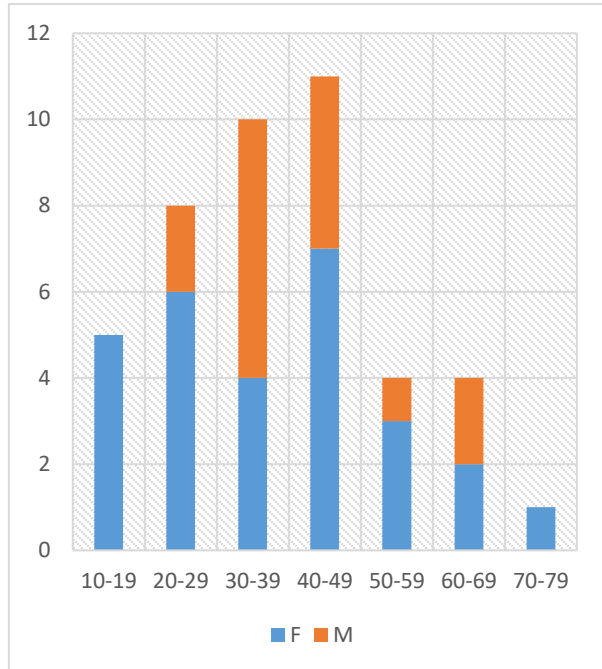


KINGDOM OF ESWATINI MINISTRY OF HEALTH

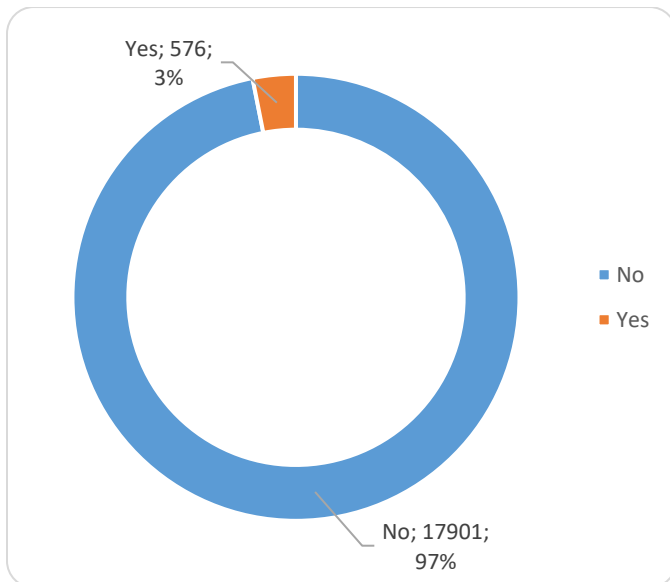


Age-sex distribution of COVID-19 cases (past two weeks)

- 65% of the cases are females, 35% are males.
- Mean age is 39 years (SD 15.3).
- 26% of the confirmed cases are aged 40-49 years.
- 12% of the confirmed cases are aged 10-19 years.
- There were no new confirmed cases among children aged <10 years.



Distribution of cases by HCW and non-HCW



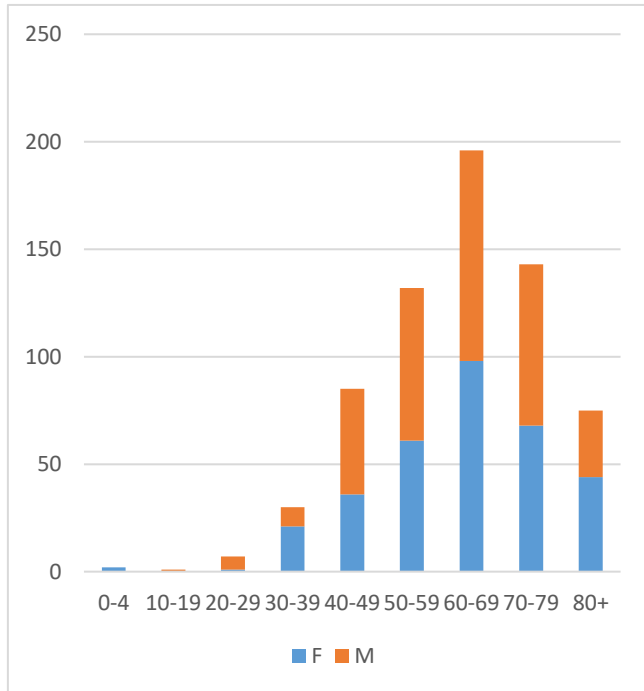
- 3% of the overall infection is among health care workers.



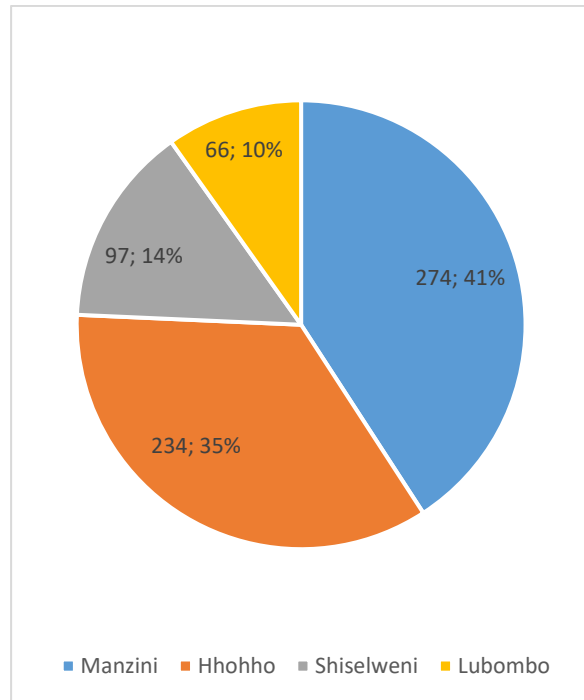
KINGDOM OF ESWATINI MINISTRY OF HEALTH



COVID-19 Deaths by age and sex (cumulatively)



Cumulative deaths by region



COVID-19 Deaths by age and sex (past two weeks)

- There were no COVID-19 related deaths reported in the past two weeks.

Technical Areas	Variable	No
Alerts	Total No. of alerts received in the last 24 hours	15
	Number of travelers screened at points of entry	1163
Laboratory Testing	Laboratory tests done in last 24 hours	582
	No of positive tests in last 24 hours	3
	Positivity rate	0.2%

NB: EFTTIT are the door-to-door campaign teams doing mass screening and testing in COVID-19 hotspots



KINGDOM OF ESWATINI MINISTRY OF HEALTH



Laboratory testing reports disaggregated by laboratories: 26th April – 2nd May 2021.

Testing Laboratory	Suspected cases		Travelers		Totals	
	No of suspected cases tested	No positive	No of travelers tested	No positive	Total tests performed	Total Positive
Public	3527	7	573	1	4100	8
Private	54	0	1536	2	1590	2
Total	3581	7	2109	3	5690	10

COVID-19 Vaccination updates

Region	Registrations		Vaccinations	
	New registrations	Cumulative registrations	New vaccinations	Cumulative vaccinations
Hhohho	670	5655	379	12667
Manzini	732	5724	1445	11998
Lubombo	564	2152	269	6002
Shiselweni	357	1902	2	4550
Total	2323	15433	2095	35 217

NB: Note that data has not been updated

PUBLIC HEALTH/ RESPONSE INTERVENTIONS

COORDINATION, PLANNING AND MONITORING

- The country has adopted an incident management approach for responding to emergencies that established the Incident Management Team (IMT) that meets on a daily basis at the PHEOC.
- The pillars review and reports on implementation progress of the Incident Action Plan (IAP) every two weeks.
- The IMT Managers reports progress on the COVID-19 response to Senior Staff of MoH every Monday and to Cabinet every Tuesday.
- RHMTs and regional PHEMCs provide feedback to IMT every week.
- Development partners participate in IMT meetings virtually during the thematic presentation.

RISK COMMUNICATION, COMMUNITY ENGAGEMENT & SOCIAL MOBILISATION

- Community mobilization and demand creation for vaccine uptake is currently ongoing in different media platforms.
- Risk communication messages continue to be aired in all media houses and the Risk Communication Team is working on reviewing and updating messages to address emerging issues.



KINGDOM OF ESWATINI MINISTRY OF HEALTH



SURVEILLANCE AND RESPONSE

- COVID -19 screening is ongoing in all health facilities and schools to identify suspect cases.
- The RRTs continue to do case investigation, contact tracing and screening and testing of suspected cases in all regions.
- There have been some efforts to step up contact tracing through establishment of contact tracing stations “kiosks” in selected areas in the Hhohho, Lubombo and Shiselweni regions. Index cases are called, screened and referred for testing and such strategies will be rolled out to other regions as per the need.
- Data collection in selected health facilities for COVID-19 sentinel surveillance and similar illnesses has been initiated.

POINTS OF ENTRY

- Screening of travelers is ongoing in all presently opened Formal 8 Points of Entry (PoE) by Port Health Officers (PHOs).

LABORATORY

- Antigen testing of inbound travelers at Ngwenya Boarder Gate is ongoing.
- The process of integrating COVID-19 testing into routine primary health care settings is ongoing in all regions.
- The COVID-19 Testing Laboratory achieved 100% performance on the WHO/AFRO External Quality Assurance done in January 2021.

INFECTION PREVENTION AND CONTROL

- The IPC team continue to conduct supportive supervision in health facilities and IPC training of health care workers is ongoing.
- Refresher training on Personal Protective Equipment (PPE) usage for health care workers to avoid wastage are ongoing.

CASE MANAGEMENT

- All Regional Health Management Teams are working with Regional Hospitals and Health Centre to decentralize management of confirmed COVID-19 cases. The teams were oriented on updated case management guidelines.
- A weekly platform (Wednesdays) has been formulated to discuss COVID-19 issues and share clinical experience with a focus.

VACCINATION

- The country received COVID-19 donations, 20 000 doses of AstraZeneca vaccine from the Government of India and the first batch of AstraZeneca vaccine (12 000 doses) from COVAX facility.
- Eswatini is one of the few countries that have utilized 100% of the vaccine doses received.
- Implementation of the National Vaccines Deployment Plan is done through coordinated partnership.



KINGDOM OF ESWATINI MINISTRY OF HEALTH



SOURCE OF INFORMATION:

- Eswatini Public Health Emergency Operations Center (PHEOC).
- COVID-19 preparedness and response plan.
- Regional and National Public Health Emergency Management Committees (PHEMCs).

This report can also be found on the government website on <http://www.gov.sz/index.php>

Information Controls	Incident Management Team
Submitter's Details:	Mr. Nhlanhla Nhlabatsi, Epidemiologist, MoH EDCU Tel: +268-24047436 Email: epidemiologymoh@gmail.com