



## Corona Virus Disease (COVID-19) Situational Report

Report No.210 Date of Issue 13<sup>th</sup> October, 2020, 19:00 GMT

### HIGHLIGHTS

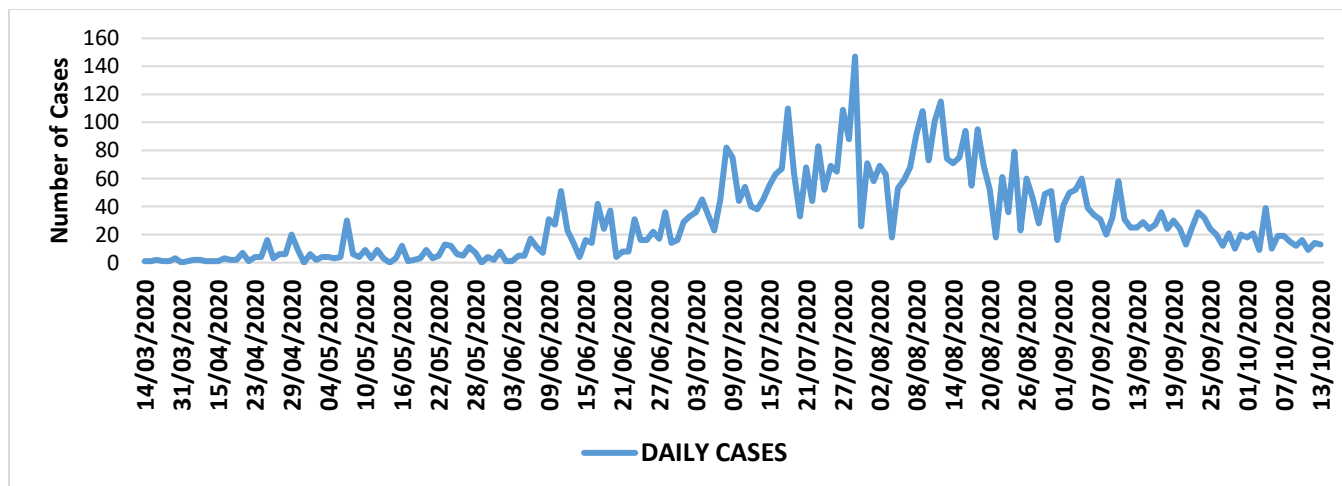
- As of 13<sup>th</sup> of October 2020, there were 5696 confirmed COVID-19 cases, 114 deaths and 5337 recoveries in Eswatini.
- 13 COVID-19 cases and 15 recoveries were reported in the last 24 hours.
- 94% of reported COVID-19 cases have recovered.
- The new cases are from 2 regions (Hhohho and Manzini)
- In the last 24 hours, 269 COVID-19 tests were conducted. Positivity rate was 5%.

New	Confirmed	13
	Recoveries	15
	Deaths	1
Cumulative	Confirmed	5696
	Recoveries	5337
	Deaths	114
Case fatality rate		2.0%

Summary of COVID-19 Cases in Eswatini as at 13<sup>th</sup> October, 2020

Region	New cases	Cumulative confirmed cases	Cumulative deaths	Case fatality rate (%)
Manzini	7	2576	57	2.2
Hhohho	6	2136	44	2.0
Lubombo	0	497	1	0.2
Shiselweni	0	487	12	2.5
National	13	5696	114	2.0

### Confirmed cases by day

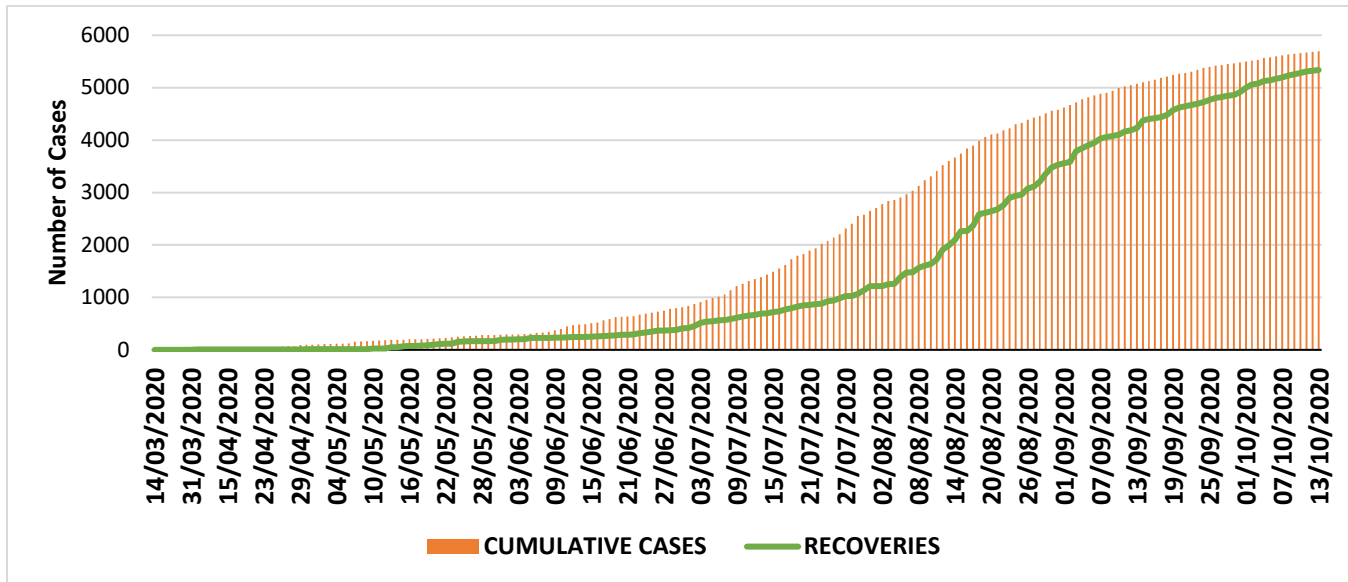




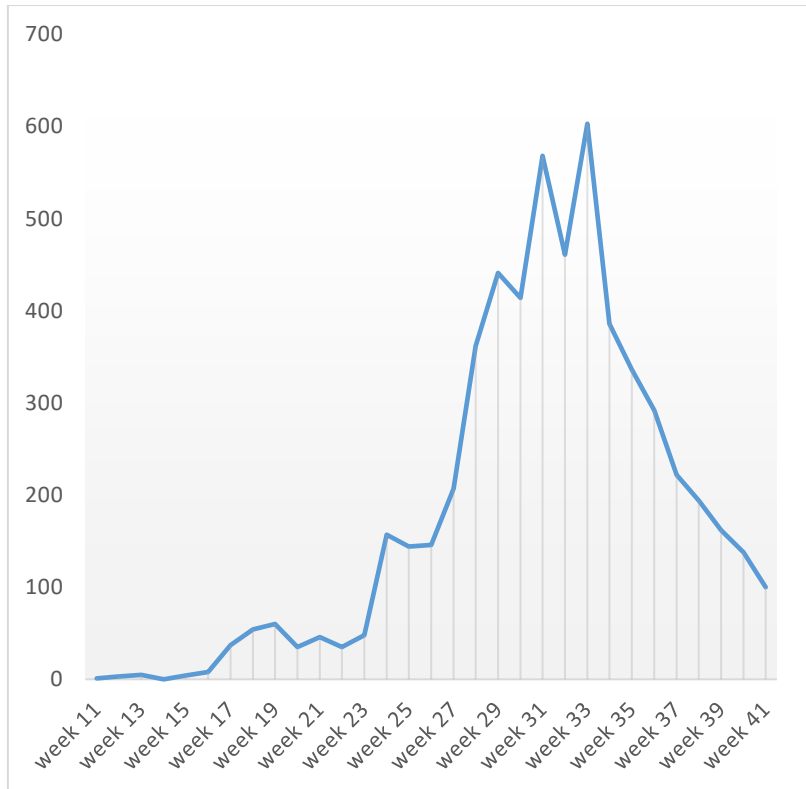
# KINGDOM OF ESWATINI MINISTRY OF HEALTH



## Cumulative confirmed cases and recoveries



## Distribution of cases by Week



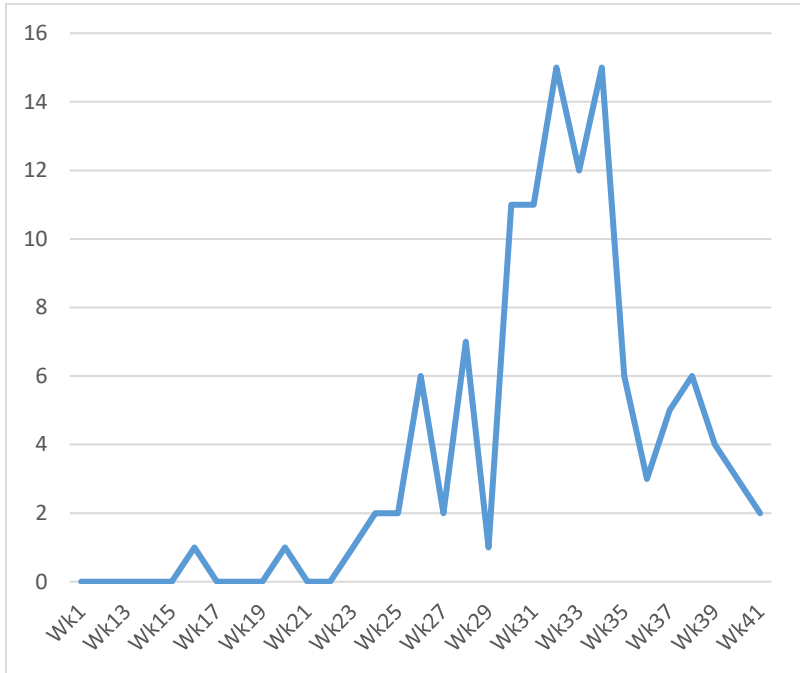
- This is epidemiological week 41.
- 100 cases have been reported in the past week.
- Weekly COVID-19 cases decreased by 28% during week 41 compared to week 40.
- **NB:** Please note that the week numbers have been changed to be in line with WHO epidemiological weeks.



# KINGDOM OF ESWATINI MINISTRY OF HEALTH

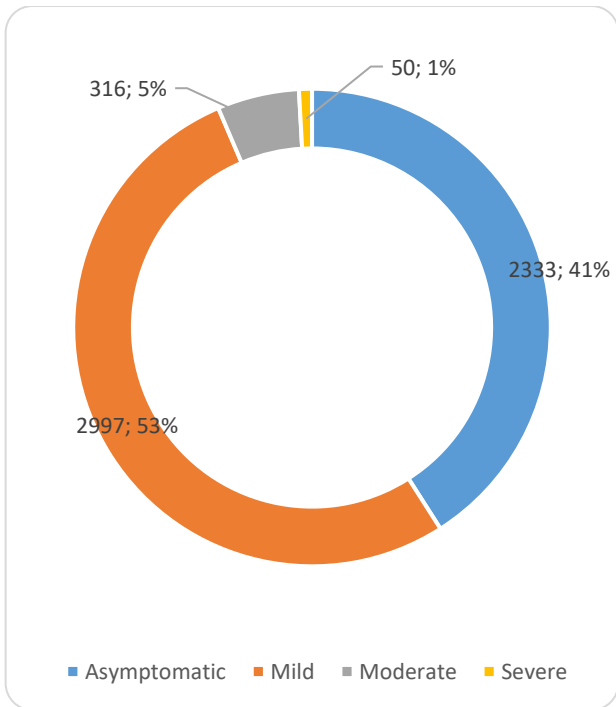


## Weekly COVID-19 related deaths

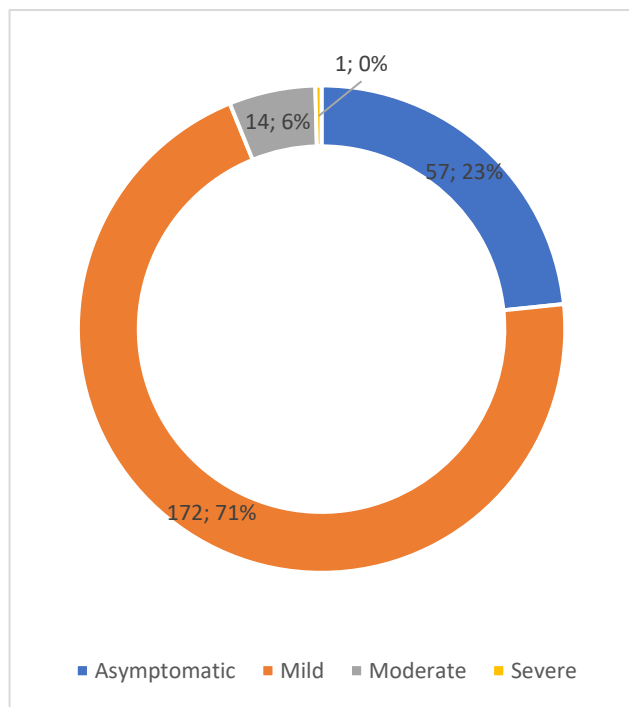


- Two COVID-19 related deaths have been reported in the past week.
- Weekly COVID-19 deaths slightly decreased from 3 to 2 during week 41 compared to week 40.
- **NB:** Please note that the week numbers have been changed to be in line with WHO epidemiological weeks.

## Cumulative confirmed cases by severity at diagnosis



## Confirmed cases by severity at diagnosis for the past 2 weeks

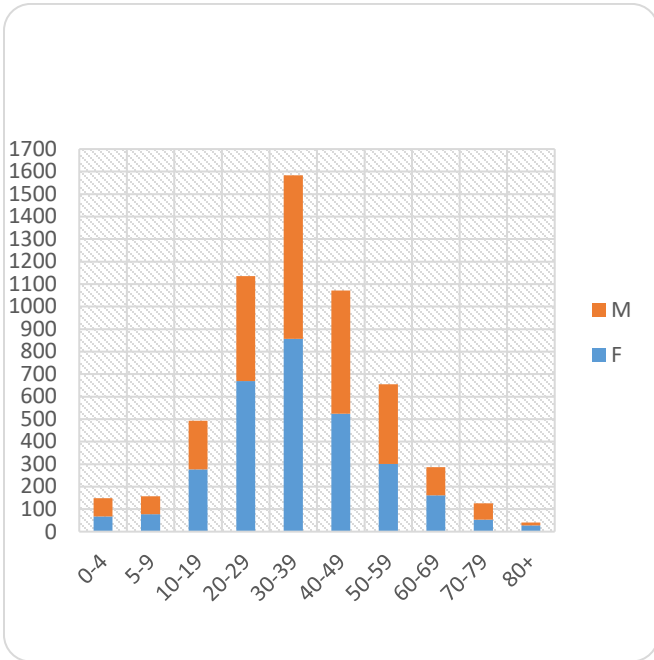




# KINGDOM OF ESWATINI MINISTRY OF HEALTH



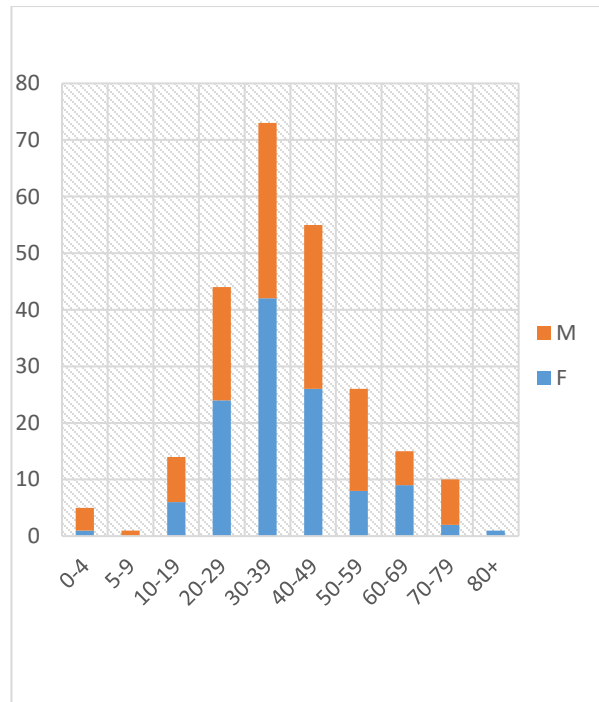
## Age-sex distribution of Covid-19 cases (Cumulative)



- 53% of the cases are females, 47% are males.
- Mean age is 36 years (SD 16.0).
- 28% of the confirmed cases are aged 30-39 years.
- 11% of the confirmed cases are aged 5-19 years.
- 3% of the cases are children aged <5years.

## Age-sex distribution of Covid-19 cases (past two weeks)

- 48% of the cases are females, 52% are males.
- Mean age is 38 years (SD 16.0).
- 30% of the confirmed cases are aged 30-39 years.
- 6% of the confirmed cases are aged 5-19 years.
- 2% of the cases are children aged <5years.

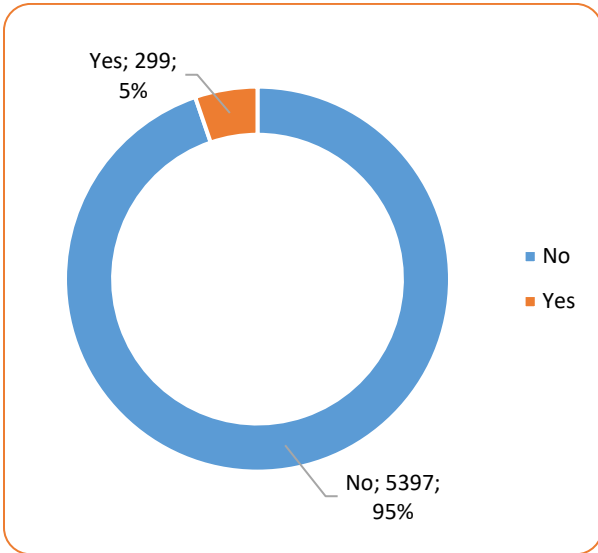




# KINGDOM OF ESWATINI MINISTRY OF HEALTH

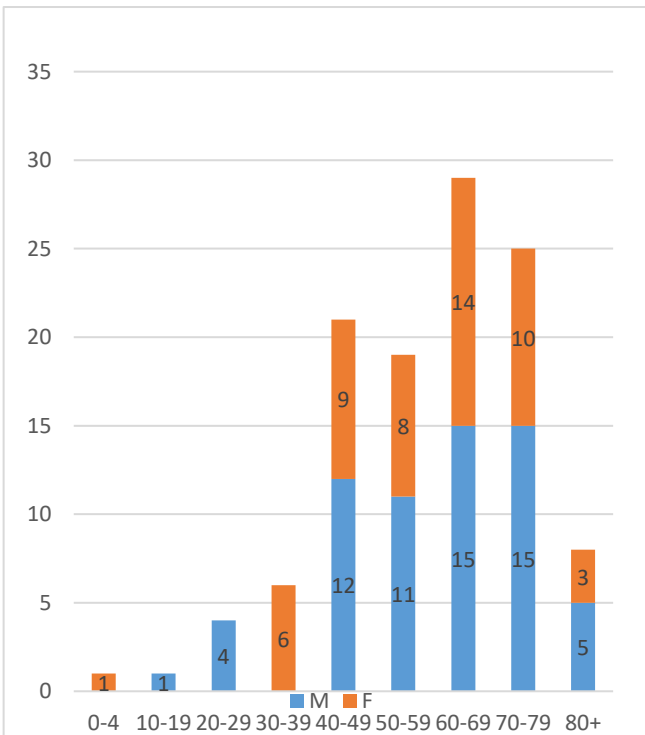


## Distribution of cases by HCW and non-HCW

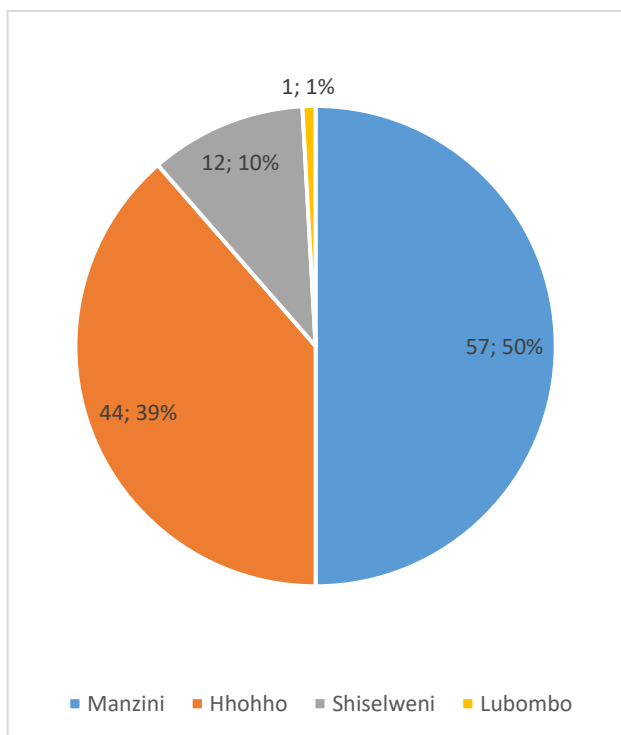


- 5% of the overall infection is among health care workers.

## Deaths by age and sex



## Deaths by region





## KINGDOM OF ESWATINI MINISTRY OF HEALTH



Technical Areas	Variable	No
Alerts	Cumulative No. of alerts received	5218
	Total No. of alerts received in the last 24 hours	9
	Number of travelers screened at points of entry	413
EFTTIT Screening	Cumulative No. screened	28141
	Suspected cases tested	834
	Total No. screened with at least one comorbidity	1500
	Cumulative confirmed cases	101
	Positivity rate	12%
Laboratory Testing	Laboratory tests done in last 24 hours	269
	No of positive tests in last 24 hours	13
	Positivity rate (%)	5%
Case Management	Total active cases	232
	Registration for care	13

### PUBLIC HEALTH/ RESPONSE INTERVENTIONS

#### COORDINATION, PLANNING AND MONITORING

- The country has adopted an incident management approach for responding to emergencies that established the incident management team that meets on a daily basis at the PHEOC.
- The Hhohho and Manzini Regional PHEMCs are meeting on a daily basis while the Lubombo and Shiselweni regions meet weekly.
- The pillars review and reports on implementation progress of the Incident Action Plan (IAP) every two weeks.
- RHMTs and regional PHEMCs provide feedback to IMT every week.
- Development partners participate virtually during the thematic presentation.

#### RISK COMMUNICATION, COMMUNITY ENGAGEMENT & SOCIAL MOBILISATION

- Risk communication team developing new jingles for TV and radio addressing the change in guidelines.
- Risk communication messages are already airing in the media houses.

#### SURVEILLANCE AND RESPONSE

- COVID -19 screening is ongoing in all health facilities to identify suspect cases.
- Contact tracing and screening of suspected cases continued by RRTs.
- EFTTIT teams are continuing with the door to door screening and testing for COVID-19.
- A protocol for the Sentinel surveillance of COVID-19 and other related illnesses is currently being finalized.

#### POINTS OF ENTRY

- Screening of Travelers is ongoing in all presently opened Formal 7 Points of Entry (PoE) by Port Health Officers (PHOs).



## KINGDOM OF ESWATINI MINISTRY OF HEALTH



- New travel guidelines have been finalized in line with the easing of international travel.

### LABORATORY

- Laboratory testing for COVID-19 is ongoing at the National Reference Laboratory.
- Verification of COVID-19 antigen testing kits (Rapid testing) has been finalized at the National COVID-19 Laboratory.

### INFECTION PREVENTION AND CONTROL

- IPC IEC has been developed and distribution to health facilities is also ongoing. The IEC focuses on donning and doffing of PPE, hand hygiene with soap and water and alcohol hand rub.

### CASE MANAGEMENT

- The Hhohho and Manzini Regional Health Management Teams are working with Regional Hospitals and Health Centre to decentralize management of confirmed COVID-19 cases. The teams were oriented on updated case management guidelines.
- Suspected cases are managed in regional hospitals and health centres and in addition, RFM and Mbabane Government hospital are managing confirmed cases.
- Even though the Shiselweni region has the lowest number of cases, it was noted that they have the highest case fatality rate.

### SOURCE OF INFORMATION:

- Eswatini Public Health Emergency Operations Center (PHEOC).
- COVID-19 preparedness and response plan.
- Regional and National Public Health Emergency Management Committees (PHEMCs).

This report can also be found on the government website on <http://www.gov.sz/index.php>

<b>Information Controls</b>	Incident Management Team
<b>Submitter's Details:</b>	Mr. Nhlanhla Nhlabatsi, Epidemiologist, MoH EDCU Tel: +268-24047436 Email: <a href="mailto:epidemiologymoh@gmail.com">epidemiologymoh@gmail.com</a>