



KINGDOM OF ESWATINI MINISTRY OF HEALTH



Corona Virus Disease (COVID-19) Situational Report

Report No.317 Date of Issue 31st January, 2021, 19:00 GMT

HIGHLIGHTS

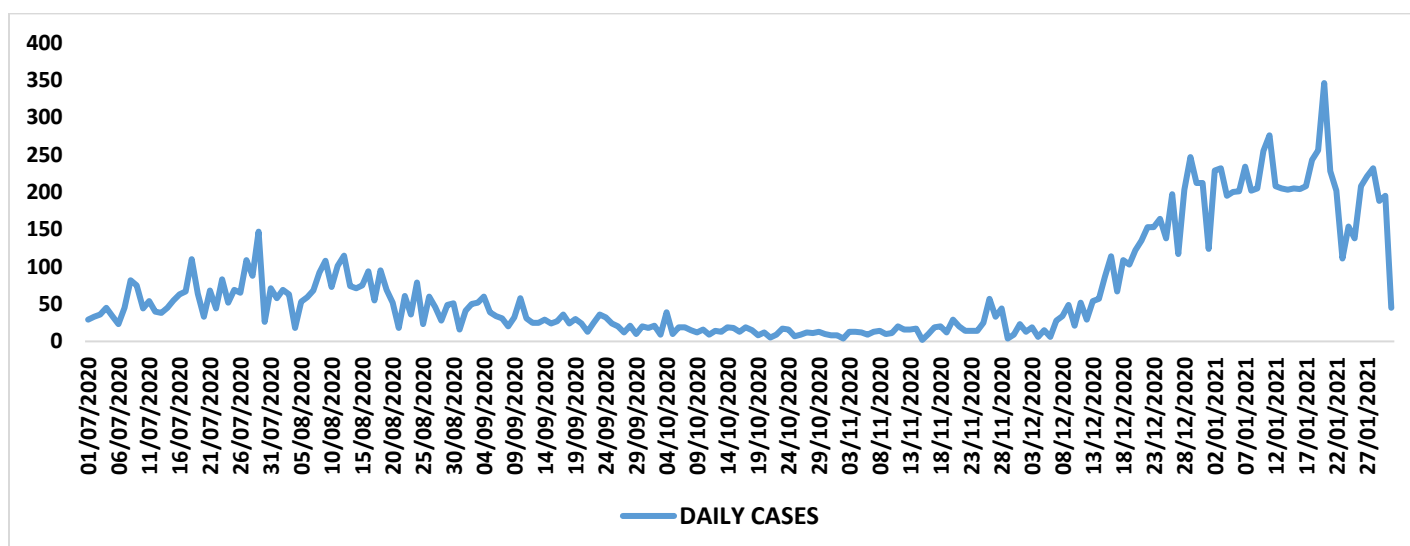
- As of 31st of January 2021, there were 45 new COVID-19 cases culminating to 15 711 cumulative cases.
- There were 1245 COVID-19 tests done in the last 24 hours, translating to a 4% positivity rate.
- The new cases were from three regions.
- There were 240 new recoveries in the last 24 hours and there were 10 478 cumulative recoveries which translates to 67% recovery rate.
- There were 3 new deaths in the last 24 hours, and the cumulative number of deaths are 565.

New	Confirmed	45
	Recoveries	240
	Deaths	3
Cumulative	Confirmed	15 711
	Recoveries	10 478
	Deaths	565
	Active cases	4668
Case fatality rate		3.6%

Summary of COVID-19 Cases in Eswatini as at 31st January, 2021

Region	New cases	Cumulative confirmed cases	Cumulative deaths	Case fatality rate (%)
Hhohho	21	6869	212	3.1
Manzini	6	6183	227	3.7
Lubombo	0	1407	56	4.0
Shiselweni	18	1252	70	5.6
National	45	15 711	565	3.6

Confirmed cases by day

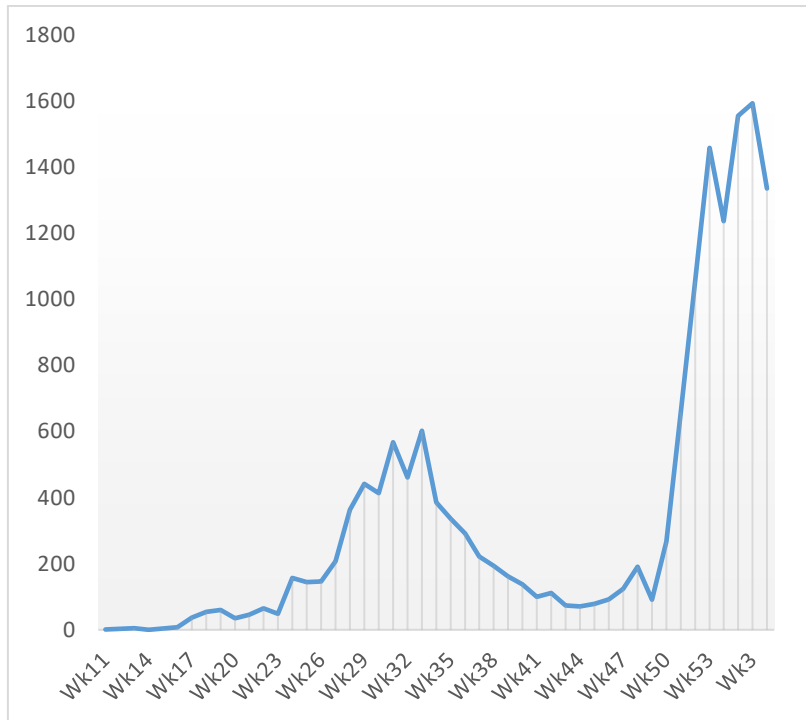




KINGDOM OF ESWATINI MINISTRY OF HEALTH

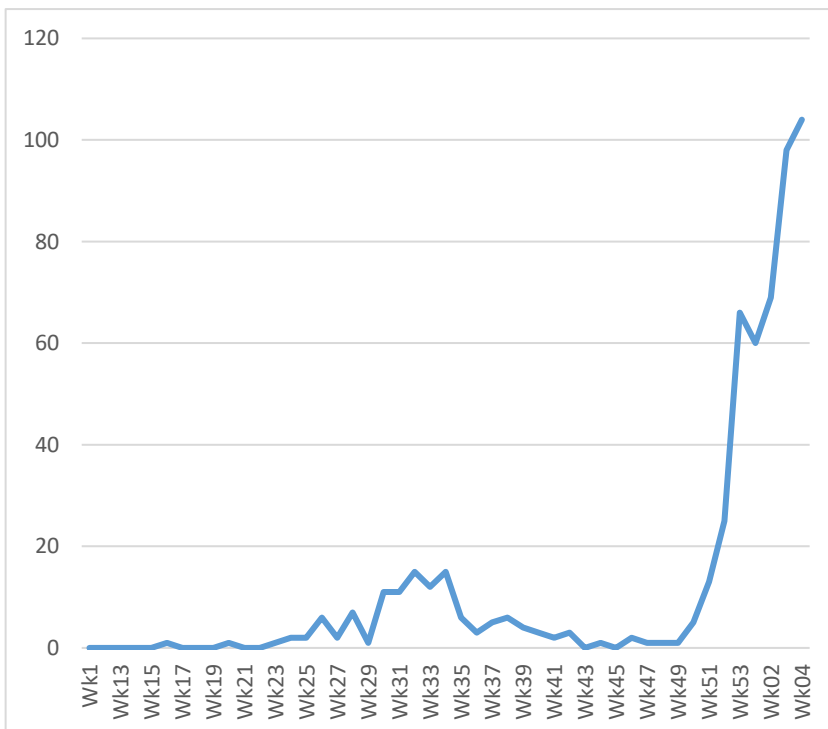


Distribution of cases by Week



- This is epidemiological week 05.
- 1336 COVID- 19 cases have been reported in the last seven days.
- Weekly COVID- 19 cases decreased by 16% during week 4 compared to week 3.
- **NB:** Please note that the week numbers have been changed to be in line with WHO epidemiological weeks.

Weekly COVID-19 related deaths



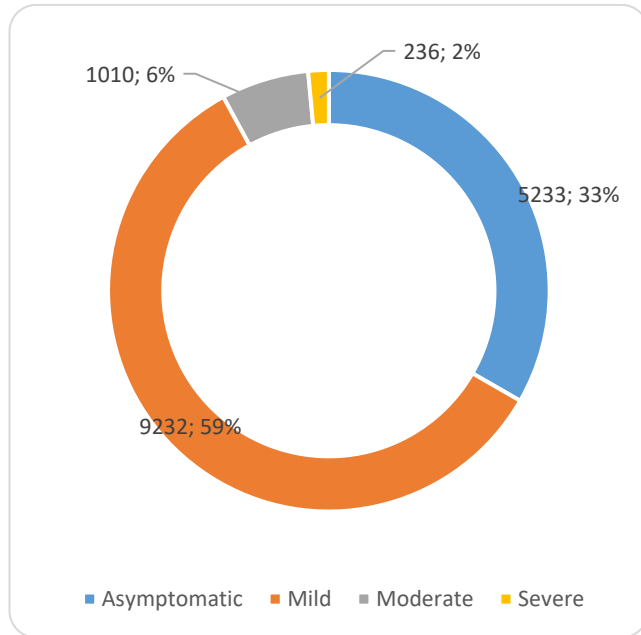
- There were 104 COVID-19 related deaths reported in week 04.
- Weekly COVID-19 deaths increased from 98 to 104 during the past week.
- **NB:** Please note that the week numbers have been changed to be in line with WHO epidemiological weeks.



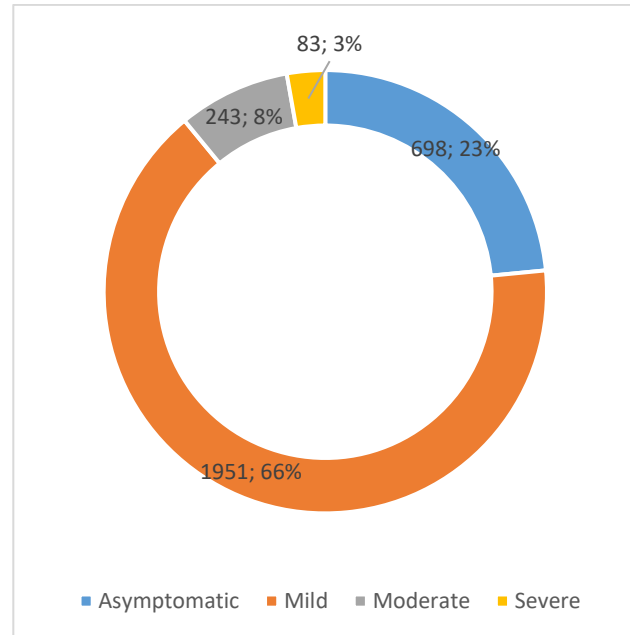
KINGDOM OF ESWATINI MINISTRY OF HEALTH



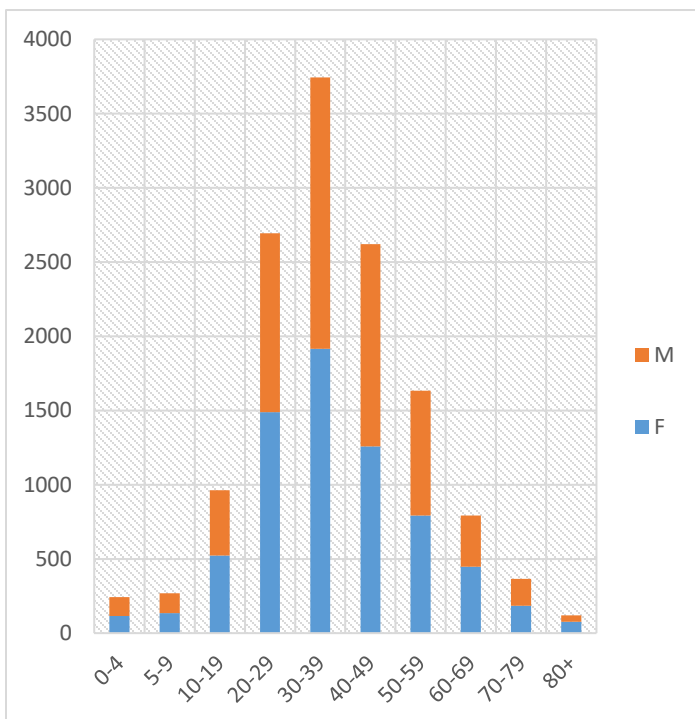
Cumulative confirmed cases by severity at diagnosis



Confirmed cases by severity at diagnosis for the past 2 weeks



Age-sex distribution of Covid-19 cases (Cumulative)



- 52% of the cases are females, 48% are males.
- Mean age is 37 years (SD 16.0).
- 28% of the confirmed cases are aged 30-39 years.
- 9% of the confirmed cases are aged 5-19 years.
- 2% of the cases are children aged <5 years.

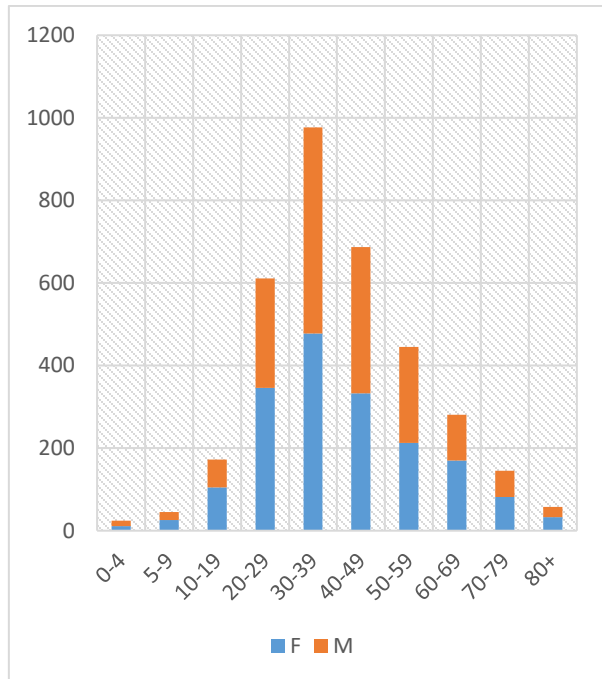


KINGDOM OF ESWATINI MINISTRY OF HEALTH

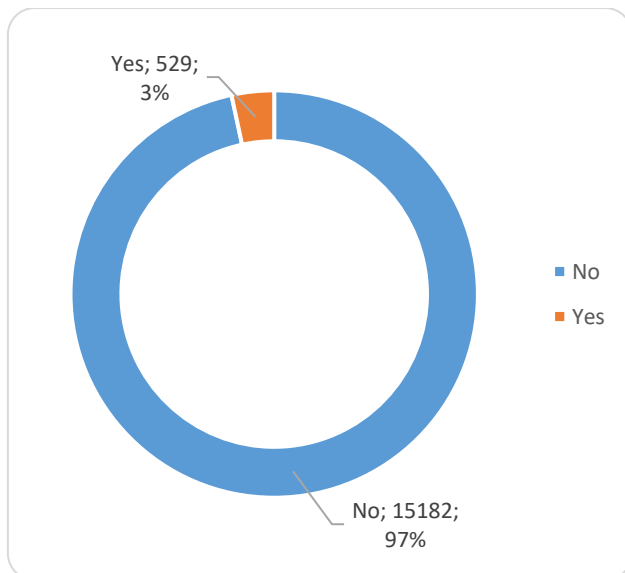


Age-sex distribution of Covid-19 cases (past two weeks)

- 52% of the cases are females, 48% are males.
- Mean age is 42 years (SD 18.0).
- 26% of the confirmed cases are aged 30-39 years.
- 7% of the confirmed cases are aged 5-19 years.
- 1% of the cases are children aged <5 years.



Distribution of cases by HCW and non-HCW



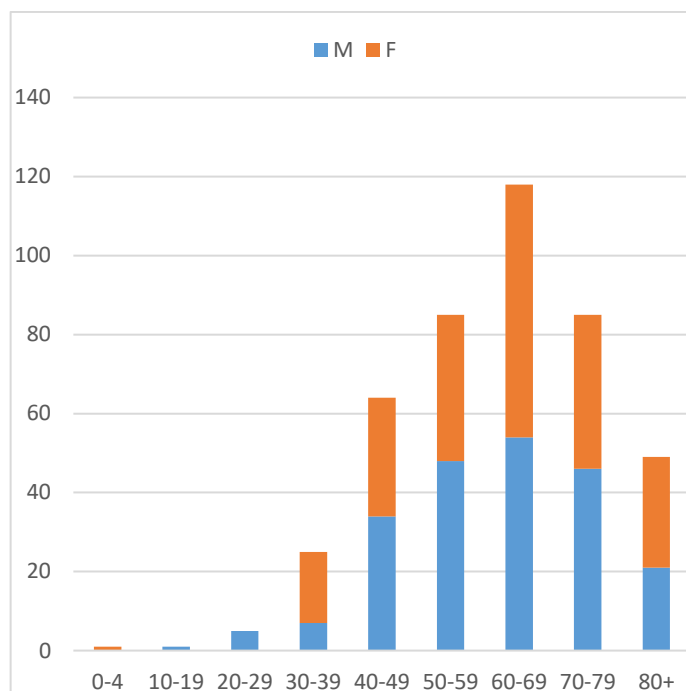
- 3% of the overall infection is among health care workers.



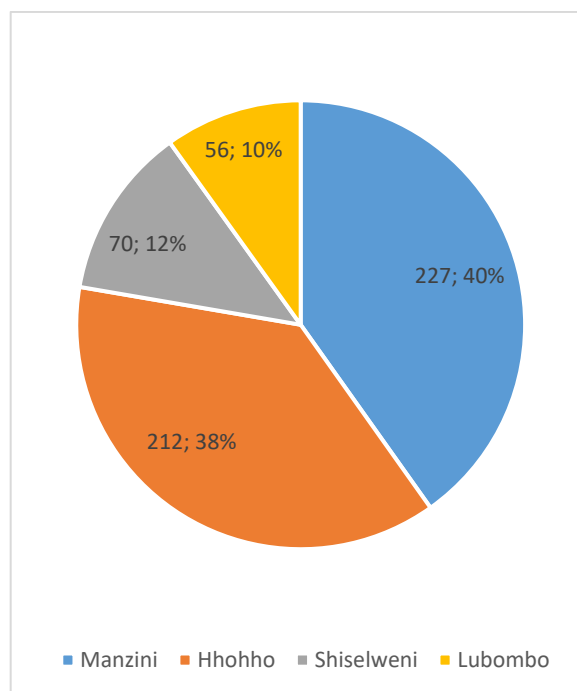
KINGDOM OF ESWATINI MINISTRY OF HEALTH



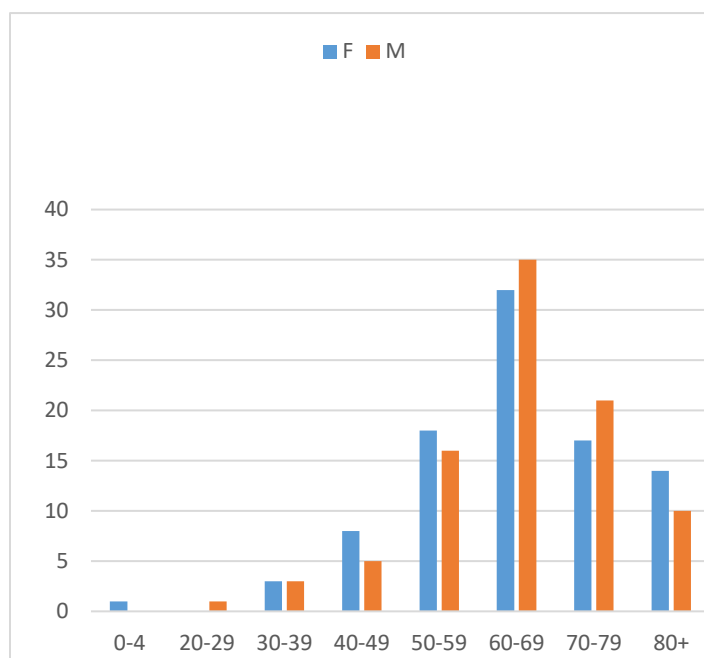
COVID-19 Deaths by age and sex (cumulatively)



Cumulative deaths by region



COVID-19 Deaths by age and sex (past two weeks)



- 48% of the deaths are females, 52% are males.
- Mean age is 65 years (SD 14.0)
- 35% of the deaths are aged 60-69 years.
- 1% of the deaths is a child less than 5 years.



KINGDOM OF ESWATINI MINISTRY OF HEALTH



Technical Areas	Variable	No
Alerts	Total No. of alerts received in the last 24 hours	112
	Number of travelers screened at points of entry	665
EFTTIT Screening	Cumulative No. screened	68332
	Total No. screened with at least one comorbidity	3880
	Suspected cases tested	2653
Laboratory Testing	Laboratory tests done in last 24 hours	1245
	No of positive tests in last 24 hours	45
	Positivity rate	4%

NB: EFTTIT are the door-to-door campaign teams doing mass screening and testing in COVID-19 hotspots

Laboratory testing reports disaggregated by laboratories: 25th – 31st January 2021.

Testing Laboratory	No of suspected cases tested	No positive	No of travelers tests done	No positive	Total tests performed	Total Positive
Public	2107	856	227	4	2334	860
Private	1356	265	4066	102	5422	367
Total	3463	1121	4293	106	7756	1227

PUBLIC HEALTH/ RESPONSE INTERVENTIONS

COORDINATION, PLANNING AND MONITORING

- The country has adopted an incident management approach for responding to emergencies that established the Incident Management Team (IMT) that meets on a daily basis at the PHEOC.
- The national Incident Action Plan (IAP) has been finalized for period 20th January to 20th February 2021.
- The pillars review and reports on implementation progress of the Incident Action Plan (IAP) every two weeks.
- The IMT Managers reports progress on the COVID-19 response to Senior Staff of MoH every Monday and to Cabinet every Tuesday.
- RHMTs and regional PHEMCs provide feedback to IMT every week.
- Development partners participate in IMT meetings virtually during the thematic presentation.
- The country has received technical experts for critical care from WHO to assist the country in management of COVID-19 critical patients.

RISK COMMUNICATION, COMMUNITY ENGAGEMENT & SOCIAL MOBILISATION

- The national campaign “*Umgcini Wesive*” for COVID-19 prevention was launched by His Excellency the Right Honorable Prime Minister of the Kingdom of Eswatini and implementation is ongoing.
- Risk communication messages continue to be aired in all media houses and the Risk Communication Team is working on reviewing and updating messages to address emerging issues.



KINGDOM OF ESWATINI MINISTRY OF HEALTH



SURVEILLANCE AND RESPONSE

- COVID -19 screening is ongoing in all health facilities to identify suspect cases.
- EFTTIT teams are continuing with the door-to-door screening and testing for COVID-19 in identified hotspots as well as congregate settings.
- The RRTs continue to do case investigation, contact tracing and screening of suspected cases in all regions.
- There have been some efforts to step up contact tracing through establishment of contact tracing stations “kiosks” in selected areas in the Hhohho region. Index cases are called, screened and referred for testing and such strategies will be rolled out to other regions as per the need.

POINTS OF ENTRY

- Screening of travelers is ongoing in all presently opened Formal 7 Points of Entry (PoE) by Port Health Officers (PHOs).

LABORATORY

- Antigen testing of inbound travelers at Ngwenya Boarder Gate is ongoing.
- Antigen testing has been adopted as one of the testing strategies in the country and has been introduced in all hospital and health centres (private and public).

INFECTION PREVENTION AND CONTROL

- The IPC team continue to conduct supportive supervision in health facilities and IPC training of health care workers is ongoing.

CASE MANAGEMENT

- The Hhohho and Manzini Regional Health Management Teams are working with Regional Hospitals and Health Centre to decentralize management of confirmed COVID-19 cases. The teams were oriented on updated case management guidelines.
- The ministry has established a site for initiation of care at the EPR site in Malagwane for COVID-19 positive patients registered under home care.
- The case management team is conducting supportive supervision on COVID-19 case management to health facilities.
- A weekly platform (Wednesdays) has been formulated to discuss COVID-19 issues and share clinical experience with a focus.

SOURCE OF INFORMATION:

- Eswatini Public Health Emergency Operations Center (PHEOC).
- COVID-19 preparedness and response plan.
- Regional and National Public Health Emergency Management Committees (PHEMCs).



KINGDOM OF ESWATINI MINISTRY OF HEALTH



This report can also be found on the government website on <http://www.gov.sz/index.php>

Information Controls	Incident Management Team
Submitter's Details:	Mr. Nhlanhla Nhlabatsi, Epidemiologist, MoH EDCU Tel: +268-24047436 Email: epidemiologymoh@gmail.com